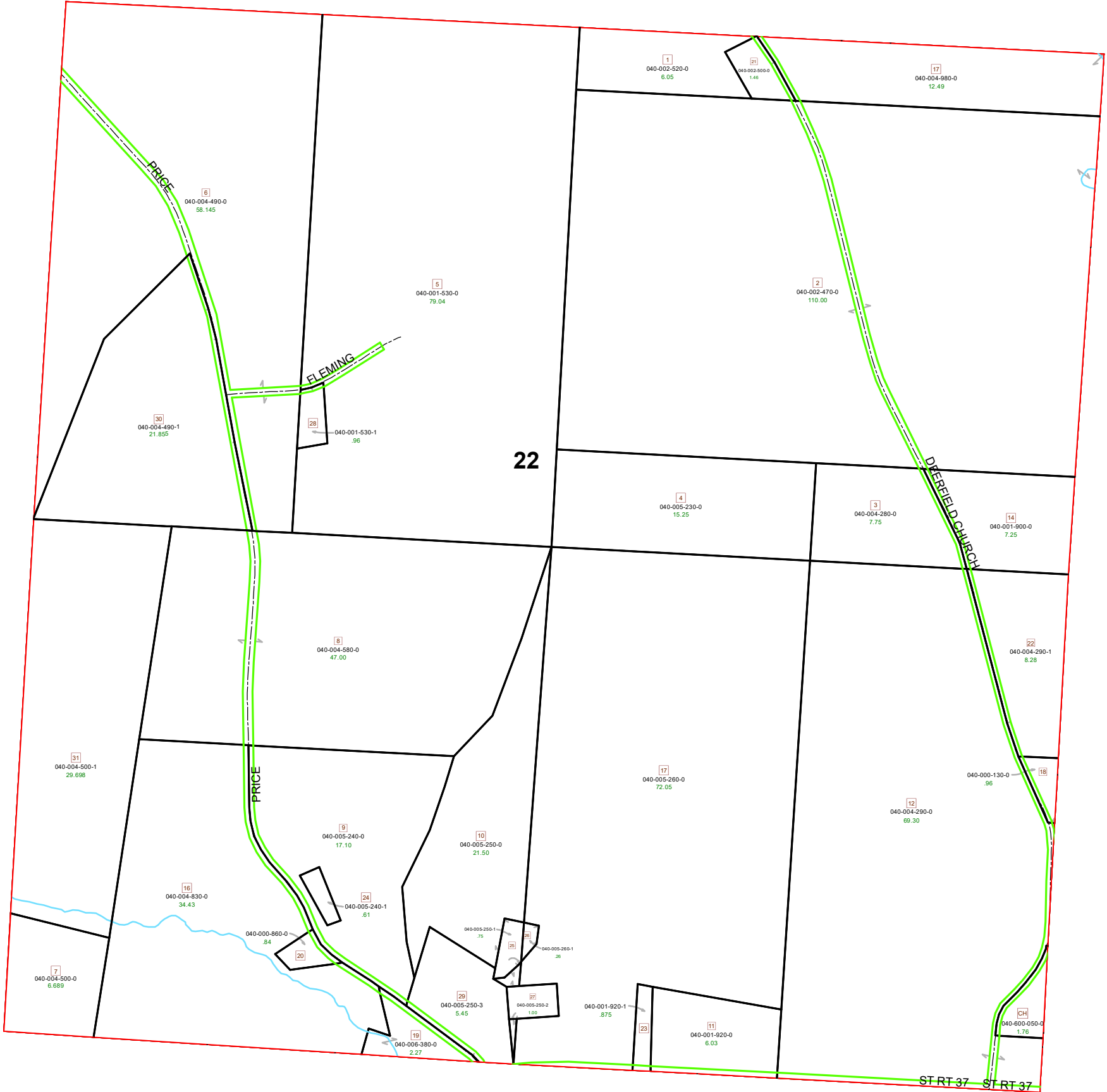


DEERFIELD TOWNSHIP SECTION 22 R13 TWP 9 MORGAN COUNTY, OH



PIN	VOL	PAGE	Owner	LegalDescr	Acres
040-004-500-1	OR234	1436	BRUMBAUGH JULIE E	R13 T9 S22 SD31	29.698
040-004-490-1	OR234	1436	BRUMBAUGH JULIE E	R13 T9 S22 SD 30	21.855
040-600-050-0			CHURCH (DEERFIELD)	R13 T09 S22 LOT 6-	1.76
040-000-860-0	D.V 154	409	CLAYPOOL SHERMAN & LINDA	R13 T09 S22 SD 20	0.84
040-001-530-1	OR118	54	FLEMING GEORGE M & JUDITH A	R13 T09 S22 SD 28	0.962
040-001-530-0	D.V 89	425	FLEMING GEORGE M & JUDITH A	R13 T09 S22 SD 5	79.038
040-001-900-0	OR222	2890	HINKLE ELLEN K TRUSTEE	R13 T09 S22 SD 14	7.25
040-004-290-1	OR76	497	HINKLE PAUL D JR	R13 T09 S22 S D 22	8.28
040-001-920-0	OR206	3140	HITE JERRY	R13 T09 S22 SD 11	6.025
040-002-470-0	OR207	2860	KASLER JAMES W JR & DIANE K TRUSTEE	R13 T09 S22 SD 2	110
040-002-500-0	D.V 170	641	KINCAID CHRISTOPHER E	R13 T09 S22 SD 21	1.461
040-002-520-0	OR208	3287	KINCAID HELEN	R13 T09 S22 SD 1	6.049
040-004-290-0	OR204	223	LAPP NELSON A & ANNA CO-TRUSTEES	R13 T09 S22 SD 12	69.3
040-004-280-0	OR204	223	LAPP NELSON A & ANNA CO-TRUSTEES	R13 T09 S22 SD 3	7.75
040-001-920-1	OR10	778	MILLER BILL R & DANNY L	R13 T09 S22 SD 23	0.875
040-004-490-0	OR234	1882	PATTERSON JOHN R	R13 T09 S22 SD 6	58.145
040-004-500-0	OR234	1882	PATTERSON JOHN R	R13 T09 S22 SD 7	6.689
040-004-580-0	OR204	2714	REED CLAIR L & PHYLLIS M REV TRUST	R13 T09 S22 SD 8	47
040-004-830-0	D.V 193	676	ROLLYSON JAMES W & MARY E	R13 T09 S22 SD 16	34.43
040-000-130-0	OR214	3230	SCHWARTZ LUELLA F & NOAH J	R13 T09 S22 SD 18	0.96
040-004-980-0	OR211	182	SHERMAN ROGER W	R13 T09 S22 SD 17	12.49
040-005-250-2	OR108	301	SLIVKA JOHN RAY	R13 T09 S22 SD 27	1
040-005-250-3	OR208	2811	SLIVKA JOHN RAY & JANET K	R13 T09 S22 SD 29	5.445
040-005-260-1	OR29	362	SLIVKA JOSEPH J & REBECCA L	R13 T09 S22 SD 26	0.257
040-005-250-1	OR29	362	SLIVKA JOSEPH J & REBECCA L	R13 T09 S22 SD 25	0.745
040-005-240-1	OR13	777	SLIVKA MICHAEL S & AMY	R13 T09 S22 SD 24	0.614
040-005-250-0	OR29	362	SLIVKA MICHAEL STEVEN ETAL	R13 T09 S22 SD 10	21.496
040-005-240-0	OR196	579	SLIVKA MICHAEL STEVEN ETAL	R13 T09 S22 SD 9	17.096
040-005-260-0	OR196	579	SLIVKA MICHAEL STEVEN ETAL	R13 T09 S22 SD 17	72.047
040-005-230-0	OR196	579	SLIVKA MICHAEL STEVEN ETAL	R13 T09 S22 SD 4	15.25
040-006-380-0	OR194	349	WILSON MARY	R13 T09 S22 SD 19	2.27

Boundaries

- Future Split
- Parcel
- Hydro
- ROW
- County
- Lot
- Section
- Township
- Symbols
- Roads

